

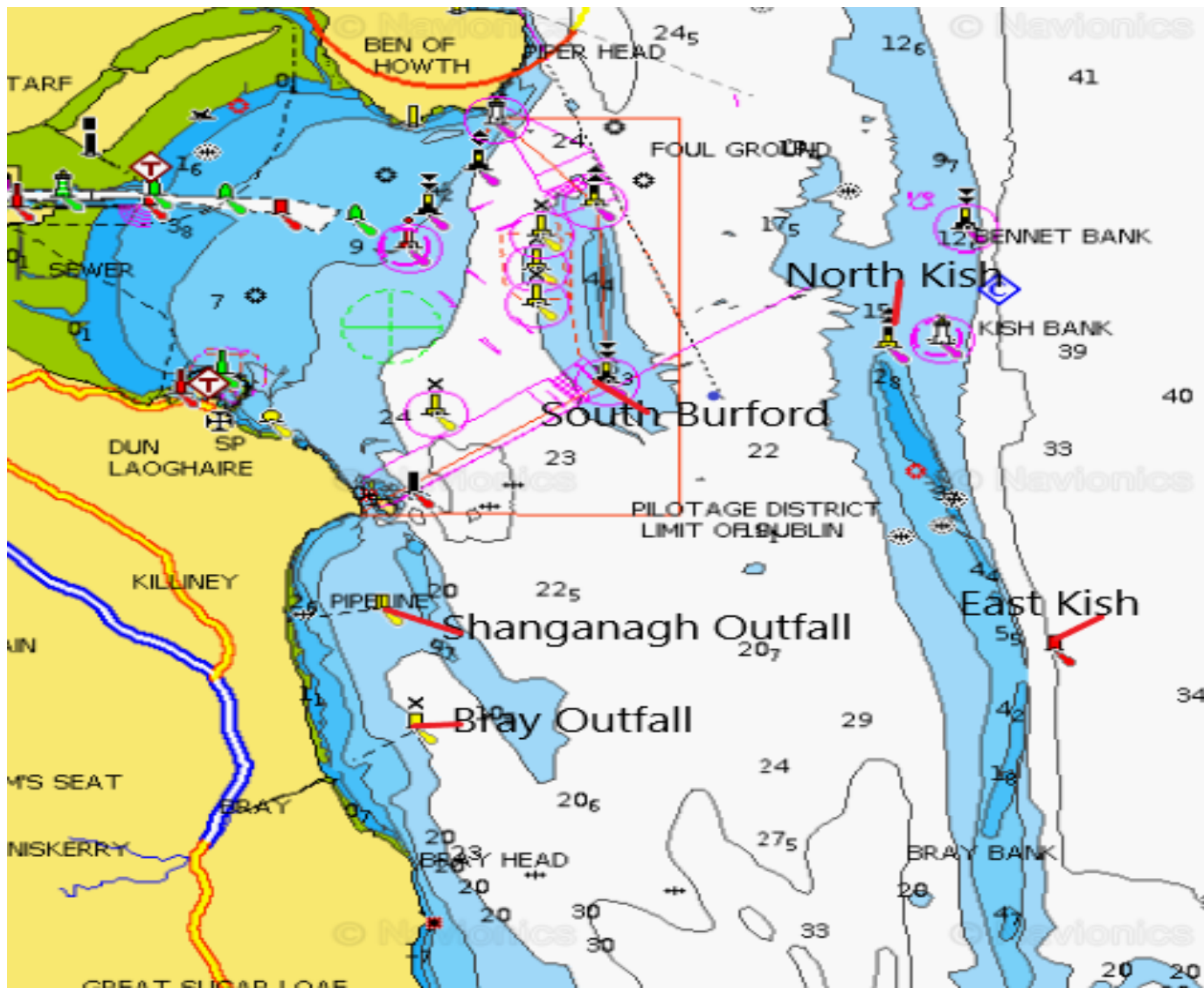


Coastal Races 2019

VHF CHANNEL 74

VERSION 2 07.05.19

North 000	North East 045	East 090	South East 135	South 180	South West 225	West 270	North West 315
A	B	C	D	E	F	G	H
1 South Bar S S. Burford S Bray O/Fall S Muglins P * New Ross P Saoirse P Finish- Turning	1 N Ross S Muglins S Shanganagh P Nth Kish P Finish- Turning	1 Nth Kish S Bray O/fall S Muglins P Finish- Turning	1 East Kish S Shanganagh S Muglins P Finish- Turning	1 Pier P Nth Kish S Bray O/Fall S Sth Burford P Finish- Turning	1 Boyd P Nth Kish S Bray O/fall S Muglins P Finish- Turning	1 Merrion P Nth Kish S Sth Burford S Nth Kish S Finish- Turning	1 Seapoint S Nth Kish S Shanganagh S Sth Burford P Finish- Turning
2 South Bar S Muglins S Bray O/fall S Muglins P Saoirse P Finish- Turning	2 N Ross S Muglins S Shanganagh P Sth Burford P Boyd P Finish- Turning	2 Sth Burford S Bray O/fall S Muglins P Finish- Turning	2 Muglins S Bray O/fall P Sth Burford P Finish- Turning	2 Pier P Muglins S Shanganagh P Sth Burford P Finish- Turning	2 Boyd P Sth Burford S Bray O/fall S Muglins P Finish- Turning	2 Merrion P Nth Kish S Finish- Turning	2 Seapoint S Nth Kish S Sth Burford P Muglins S Finish- Turning
3 Middle S Muglins S Shanganagh S Muglins P Finish- Turning	3 N Ross S Muglins S Shanganagh P Muglins P Boyd P Finish- Turning	3 Sth Burford S Shanganagh S Muglins P Finish- Turning	3 Muglins S Shanganagh S Muglins P Finish- Turning	3 Pier P Muglins S Shanganagh S Muglins P Finish- Turning	3 Boyd P Muglins S Shanganagh S Muglins P Finish- Turning	3 Merrion P Sth Burford S Finish- Turning	3 Seapoint S Muglins S Shanganagh S Muglins P Finish- Turning
4 Middle S Muglins P Boyd P Finish- Turning	4 N Ross S Muglins P Boyd P Finish- Turning	4 Sth Burford S Finish- Turning	4 Muglins S Pier P Omega S Finish- Turning	4 Pier P Muglins S Finish- Turning	4 Pier P Muglins S Finish- Turning	4 Merrion P Muglins P Finish- Turning	4 Seapoint S Muglins S Finish- Turning



Approximate Positions

Location	Coordinates
Bray O/ fall	53°13.25'N 006° 04.49'W
East Kish	53° 14.34'N 005° 53.58'W
Shanganagh O/fall	53° 14. 90'N 006° 05.06'W
Muglins	53° 16.53'N 006°04.57'W
North Kish	53° 18.55'N 005° 56.43'W
Sth. Burford	53° 18.42'N 006° 01.28'W

Class	Warning Signal
Cruisers 0/1	12:45
31.7s	12:50
Cruisers 2	12:55
Cruisers 3	13:00
B211s	13:05
Cruisers 5	13:10
Ruffians	13:15
Shipmans	13:20
Glens	13:25

Approximate Positions of Dublin Bay Buoys used on Coastal Courses

South Bar	53°20.22'N	006° 07.45'W
New Ross	53°19.60'N	006° 06.30'W
Saoirse	53°19.02'N	006° 08.15'W
Middle	53°19.55'N	006° 07.48'W
Boyd	53°18.85'N	006° 07.37'W

Pier	53°18.10'N	006° 06.84'W
Omega	53°17.78'N	006° 06.23'W
Merrion	53°18.92'N	006° 09.20'W
Seapoint	53°19.48'N	006° 0.60'W
Finish- Turning	53°18.43'N	006° 08.34'W